



JTCECSC

Disability Expo

Guide



PROUDLY SUPPORTED BY
CITY OF
MANDURAH



17 Oct 2025



10am-2pm

303 Pinjarra Road
Mandurah MARC
Show Courts



act belong commit

Mentally Healthy School

Acknowledgement of Country.

We would like to acknowledge that the expo is being held on the traditional land of the Bindjareb people, and pay our respects to their Elders past, present and emerging.

We acknowledge and respect their continuing culture and the unique contribution they make to the life of this community.



Principal's Welcome

It is my great pleasure to welcome you all to the 9th Annual JTCESC Disability Expo.

Over the years, this event has grown tremendously, and it is heartwarming to see how far we have come.

Since our inception in 2016 with 17 service providers gathered in two classrooms, we now proudly host over 100 stall holders, including service providers, local government representatives, community groups, and local micro businesses here at the Mandurah Aquatic Recreation Centre.

This expo is more than just an event; it is a celebration of community connections and the invaluable services available to our students, both present and past, as well as to the wider community. Each year, we witness the positive impact this expo has on fostering relationships, sharing resources and creating opportunities for everyone involved.

The growth of this expo is a testament to the dedication and hard work of everyone here today. Your participation and support have been instrumental in making this event a success. It is through your efforts that we can continue to provide essential services and build a stronger, more inclusive community.

Thank you for being here and for your ongoing commitment to the JTCESC Disability Expo.

Let's make this year's event the best one yet!

Kristin Lucas



Principal Kristin Lucas

PARKING

Ample parking is available at the MARC, which includes 16 ACROD parking bays. It's important to keep in mind that the MARC is operating normally, which may lead to congestion in the parking area at times. Additional parking spaces can also be found at the Mandurah Forum.



PUBLIC TRANSPORT

Bus routes that operate along or within 200 meters of the MARC include numbers 588, 591, 592, 593, 594, and 600. From the bus stop, proceed straight through the car park and take a left around the corner to arrive at the front of the MARC building.



Scan the QR Code to organise your trip with the Transperth journey planner.

CHANGING PLACES FACILITY



A Changing Places facility can be found within the MARC. These secure and hygienic spaces are specifically designed for individuals with disabilities who need assistance when using the restroom away from home.

Each facility is equipped with a ceiling hoist, an adult-size change table, and ample space for two support people.

Additionally, there is another Changing Places facility located inside the Mandurah Forum Shopping Centre.

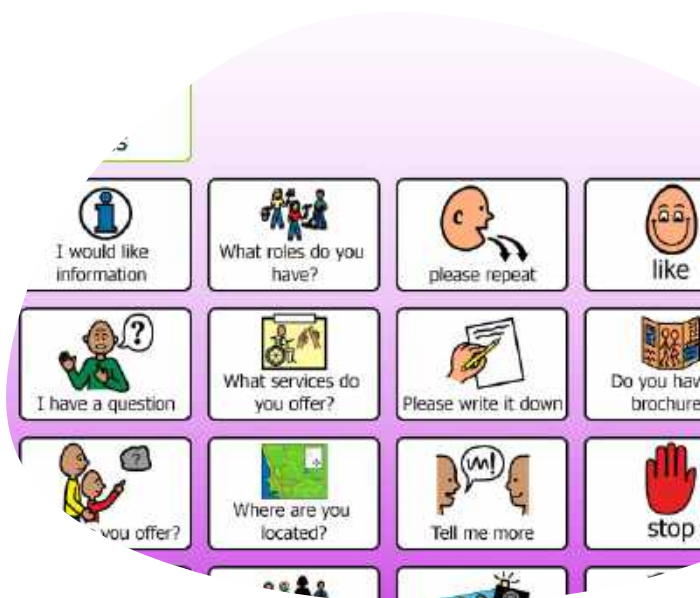
Access to changing places is via a Master Locksmith Access Key (MLAK) ensuring these facilities remain reserved for people who need them

To find out more scan the QR Code



COMMUNICATION BOARDS

A Disability Expo specific communication will be available at the expo located on all stall holder tables as well as available to download or print by scanning the QR code.



SOCIAL STORY

A social story is a document that uses storytelling techniques to explain new experiences and environments to people who are autistic or who have sensory sensitivities.

Anyone who experiences anxiety or is nervous when attending a place or event for the first time, may benefit from access to a social story.

A social story for our Disability Expo can be downloaded by scanning the QR code



CHILL OUT ZONE



The Chill Out Zone will be accessible at the expo, conveniently located in the foyer entrance. proudly sponsored by Solutions I.T.

This area is designed to create a quiet and calming environment, featuring a variety of soft mats, bean bags, and sensory toys, along with noise-cancelling earmuffs.

Additionally, we have tables and chairs positioned nearby, where you can engage in mindfulness colouring activities and explore virtual reality goggles, all while enjoying a peaceful atmosphere.



Photography Notice

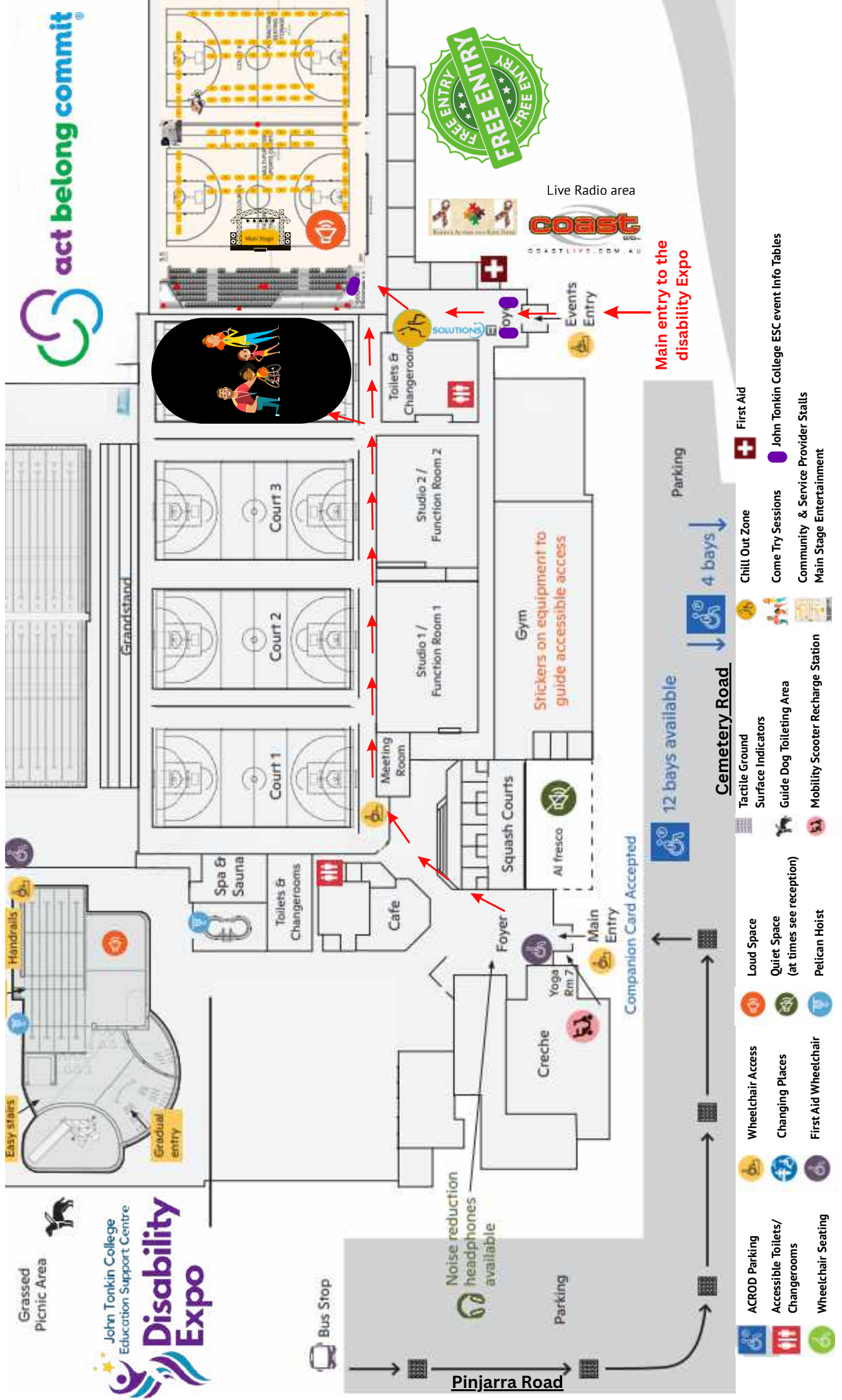
Photography and video recording are happening today to capture the joy and connection of this special event.

If you'd prefer not to be photographed, please visit the JTCECSC Information desk located in the lobby for a No Photo sticker.

We respect your privacy and want everyone to feel comfortable. Thank you for being part of our community!



Expo map

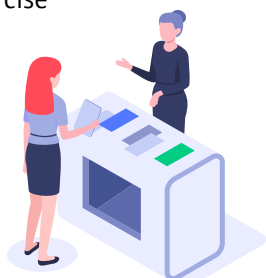


Education Support Centres

- 102. Malibu School
- 103. Halls Head Community College ESC
- 104. Meadow Springs ESC
- 105. Coastal Lakes College

NDIS Service Providers

- | | |
|-------------------------------------|---|
| 1. 4 Life Skills | 25. RippleAbility |
| 2. Adelphi Living | 26. Access Foundation |
| 3. Abilities Connect | 27. Workpower |
| 4. Carers WA | 28. Queen of Clutter |
| 5. Enable WA | 29. Serene Support |
| 6. Ermentrude Community Care | 30. Plan Partners |
| 7. HeedWA | 31. Soul Services |
| 8. Nesti Housing | 32. Simplified Plan Management |
| 9. Super Squad | 33. Control Stress Easy |
| 10. Midway | 34. Eighty 9 Limited |
| 11. Kings Park ABI Warriors | 35. Sirv |
| 12. ABBILY | 36. Finders Keepers WA |
| 13. Linked Supports Solutions | 37. Boutique Disability Services |
| 15. The Star Care Group | 38. TADWA |
| 16. Spectrum Space | 39. Pinnacle Support Services |
| 17. Peel Home & Community Supports | 40. Black Swan Health |
| 18. Life Reach Pty Ltd | 41. Helping Solutions |
| 19. Five Rivers Care | 42. Everyday Independence |
| 20. West Coast Ability | 43. Rocky Bay |
| 21. Pharmacy 777 | 44. Mosaic |
| 22. St Judes Disability Services | 45. Get Dignity First Care |
| 23. Provider Choice | 46. Chorus |
| 24. Revive Physiotherapy & Exercise | 47. LivEasy Care |
| | 48. Intelife |
| | 49. Diversity South |
| | 50. Waves WA |
| | 88. My Plan Management |
| | 89. Crystal Disability & Nursing Services |



Disability Employment Services (DES)

- 85. AtWork
- 87. APM

NDIS Partner in the Community – Local Area Coordination

- 99. APM Communities
- 100. Wanslea
- 101. National Disability Insurance Scheme

Micro Enterprise Business

- 60. Brain Fart Creations
- 61. LWG Decals, 3D Prints & Accessories
- 62. Stitched up by Kasey
- 63. Docking & Co.
- 64. Jessica's Creations
- 65. Lolbit47sart
- 66. En-Artpainter
- 67. Inclusive Voices
- 68. Blind as a Bat Creations
- 69. Margaret's Nik Naks
- 70. Floral Products by James
- 71. Norry's Art
- 72. Imaged by Kobo
- 73. Buddy's Timber Creations
- 74. Sprout Space

Sporting Clubs & Groups

- 75. WADSA
- 76. West Australian Assistance & Therapy Dogs
- 77. Volleyball WA
- 78. Mandurah Bowling Recreation Club
- 79. South Mandurah Tennis Club – Tennis 4 All
- 80. WA All Ability
- 81. Blindsports WA

Community Groups

- | | |
|------------------------------|--------------------------|
| 51. Cycling without Age | 58. Fishability |
| 52. Mandurah SES | 59. Rotary Club Mandurah |
| 53. EasyBeatz | |
| 54. Peel ADHD Parent Support | |
| 14. Inspire Radio | |
| 56. Para & Ability Dance WA | |
| 57. Mandurah Filipino-AMCS | |

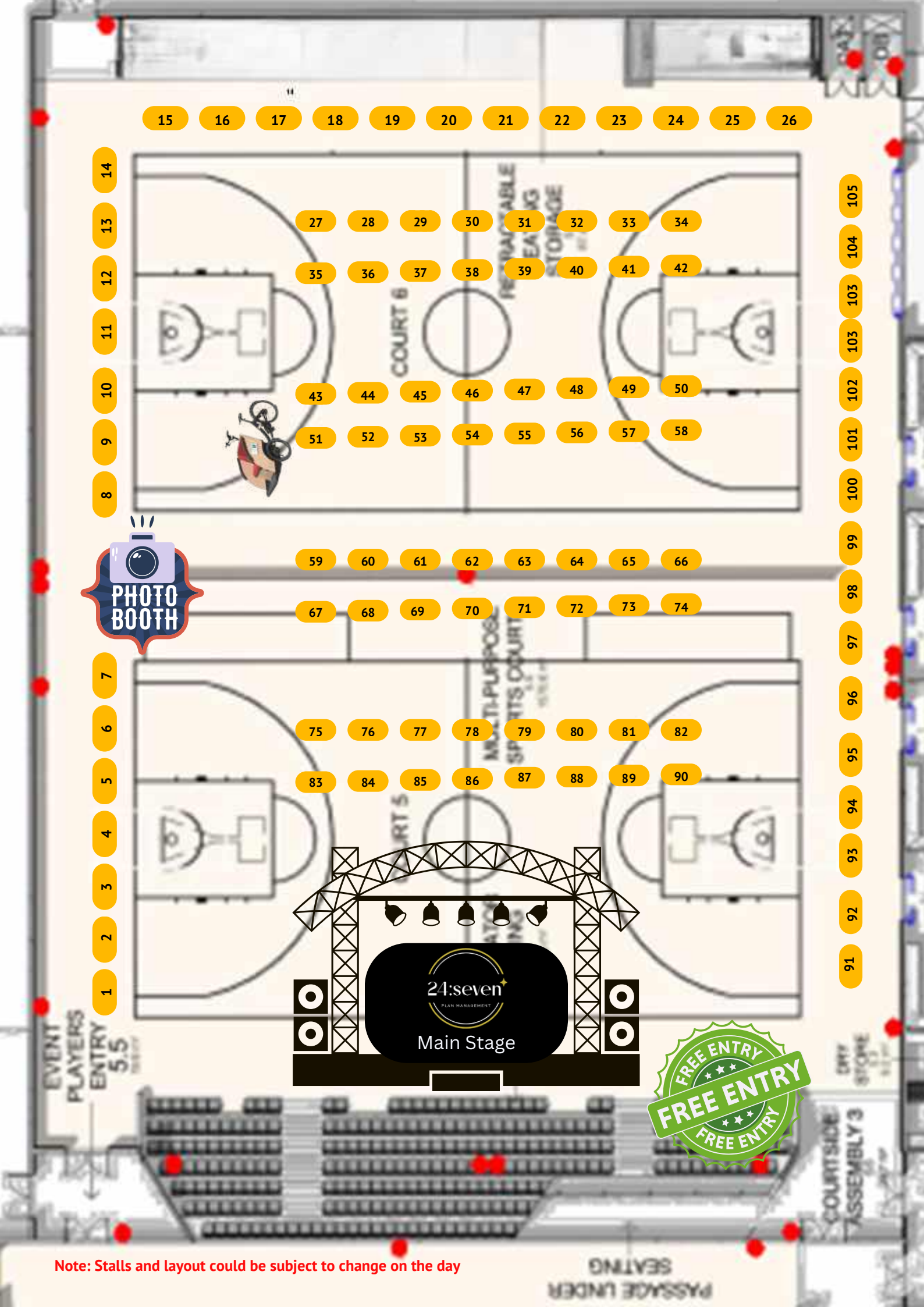
Advocacy Support

- 82. Developmental Disability WA
- 83. KIN Advocacy
- 84. People with Disability WA

Local Government & Agencies

- 90. Transperth
- 91. South Metro TAFE & Peel Jobs and Skills
- 92. Peel Volunteer Resource Centre
- 93. Bunnings Warehouse
- 86. Headspace
- 94. City of Mandurah – Youth
- 95. City of Mandurah – MARC
- 96. City of Mandurah – Libraries
- 97. City of Mandurah – Community
- 98. City of Mandurah – Act Belong Commit

Note: Stalls and layout could be subject to change on the day



Note: Stalls and layout could be subject to change on the day

10.00am

Expo Opens
(Show Courts)

10.30am

Welcome to Country -
(Main Stage)

10.45am -
1.30pm

Various Come & Try
Session on (Court 4)

10.45 am -
1.00pm

Local Performances -
(Main Stage)

2.00pm

Expo Closes - Raffle
Draw (Main Stage)



Main Stage

We are excited to announce that 24:seven Plan Management will be sponsoring our main stage at this year's JTCECSC disability expo.

Thanks to our Sponsors

NDIS SUPER TEAM KNOW WHO TO GO TO!

We're your Plan Manager – here's how the other roles support you too.



NDIS Planner

"Let's build a plan that fits your needs and dreams."

- Helps you plan your NDIS goals.
- Aligns your plan with your life objectives.
- Runs your planning meeting and reviews.
- Explains how your funding is structured.
- Your main contact at the NDIA for big changes.



Support Coordinator

"I help you make your plan work in the real world."

- Connects you with the right providers.
- Coordinates your services.
- Builds your capacity to manage supports.
- Helps you prepare for unexpected events.
- Works with you to remove barriers.



Plan Manager

"I take care of the numbers, so you don't have to."

- Manages your NDIS budget.
- Pays providers promptly.
- Gives you choice and control.
- Tracks your spending and alerts you.
- Sends you monthly budget summaries.
- Helps with financial decisions related to your plan.



Local Area Coordinator

"Let's connect you to the services around you."

- Offers local knowledge and resources.
- Supports access to community services.
- Assists with plan implementation.
- Links you to mainstream supports (e.g., health, education).
- May help prepare you for your first NDIS plan.



mail@247pm.com.au



0481 247 742



www.247pm.com.au

10.45am

Mandurah Basketball

11.15am

Volleyball WA

11.45am

WA All Abilities
Football

12.10pm

South Metro Tennis
Club - Tennis4all

12.40pm

WADSA

1.10pm

Blind Sports WA

1.35pm

MARC - Pickleball

1.50pm

Close of Come Try
Sessions

Note: come & try sessions could be subject to change on the day

Come & Try Session Times

Thanks to our Sponsors

STEP INTO THEIR WORLD

From soothing
sensory journeys to
structured learning
adventures with



Technology that supports education

AT SOLUTIONS IT, we understand the unique IT needs of Education Support Schools. For over 26 years, we've partnered with schools across WA to provide reliable, tailored IT services that reduce tech stress and help your team focus on what matters most — your students.

►► MANAGED IT SUPPORT

Ongoing helpdesk, maintenance, user and device management

►► PROCUREMENT

From devices and interactive panels to servers and switches

►► SECURITY AND COMPLIANCE

Protecting sensitive student data with safe, school-ready solutions

Designed with diverse learners in mind

IMAGINE giving your students the chance to explore new environments, practice social skills, or simply escape into a calming, sensory-friendly world — all from the safety of the classroom.

Discover how ClassVR can enhance your students' sensory spaces and support their learning. Simply scan the QR code and fill in the form for a FREE in-school demo with a Solutions IT consultant!



10.45am

Hay Bales

11.10am

Malibu School

11.35am

Halls Head ESC - Galaxy Choir

12.00pm

Hay Bales

12.25pm

John Tonkin College
ESC

12.50pm

Hay Bales

1.20pm

Expo Closes - Raffle
Draw (Main Stage)

Note: Performances could be subject to change on the day

Local Performances Times

Thanks to our Supporters

City of Mandurah – Supporting an Accessible and Inclusive Community

The City of Mandurah proudly supports this year's Disability Expo and continues to play an important role in promoting access and inclusion across the city.

The City is committed to creating a community that supports the participation of people with disability, older adults, their families, carers and support workers. An accessible Mandurah is more vibrant, welcoming, and inclusive for everyone.

To support this, the City has developed a dedicated accessibility page on its website. This page is a valuable resource for individuals, families, carers, and support workers, offering practical information and inclusive opportunities across Mandurah. It includes:

- **Inclusive Community Activities** – a weekly guide to low-cost programs in Mandurah
- **Beach Access Information** – including details about beach wheelchairs, matting, and Changing Places facilities
- **Access and Inclusion Tools and Resources** – free downloadable materials such as communication boards, Social Stories™, planning tools, and short videos
- **Access and Inclusion Advisory Group** – information about how local community members are involved in inclusive planning

These resources are designed to support people with disability to feel connected and confident in their community.

Please feel welcome to explore, download, and share these tools.

Scan the QR code to access the City's Accessibility page:





Thank
you

Thank you for attending the JTCECSC Disability Expo! We truly appreciate your time and interest in supporting inclusive communities. Your feedback is important to us—please don't forget to scan the QR code provided to share your thoughts and help us improve future events.

Scan me



FEEDBACK SURVEY

ENGAGE | EDUCATE | ENRICH | EMPOWER